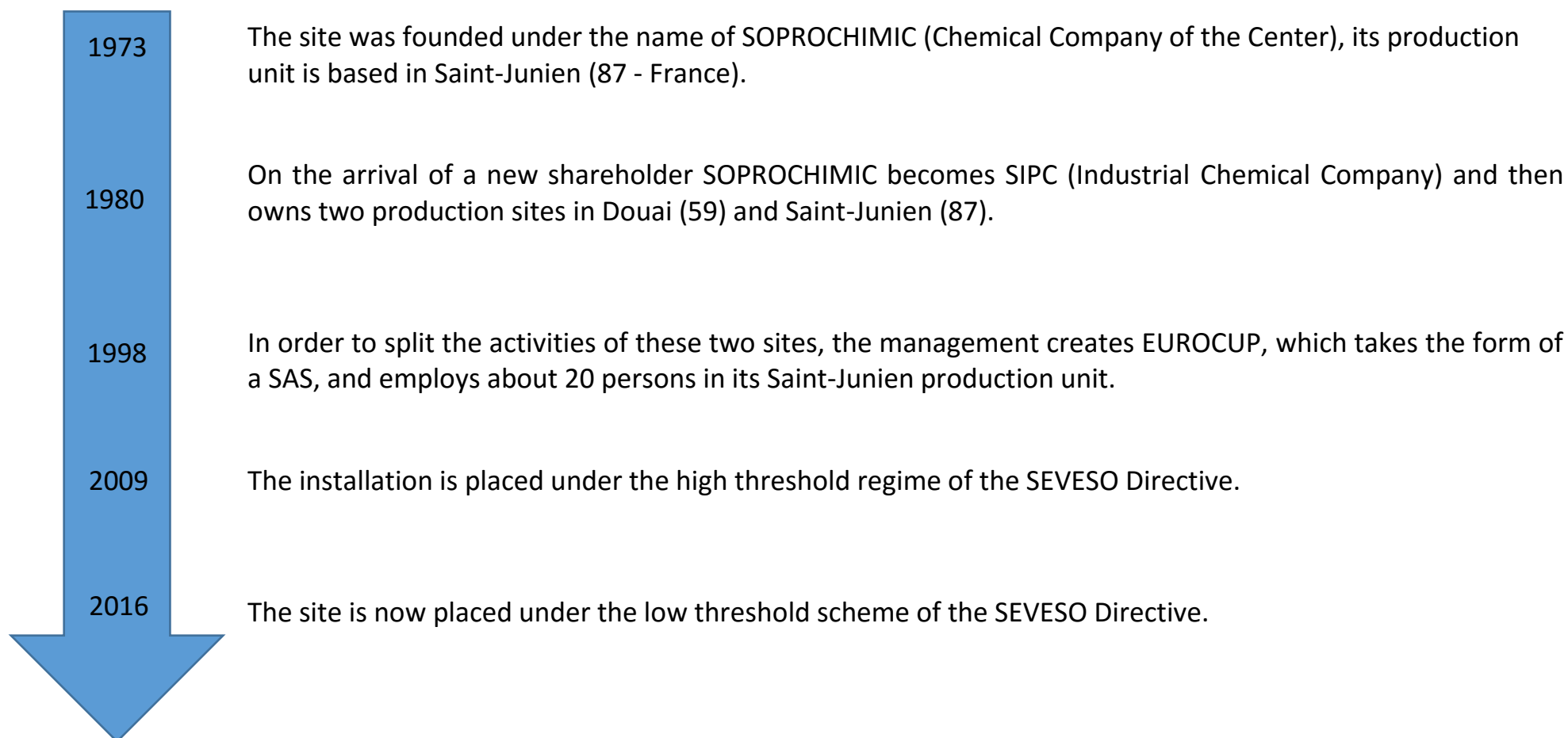


EUROCUP



The company and its history

Eurocup is the subsidiary of our parent company: SIPC. It specializes in plant protection products intended for the prevention of diseases of plant organisms, and more particularly in fungicides, wettable powders and EC fertilizers in the form of dusting. This entity allows us to diversify and complement our offers.



Our main activities

- **The synthesis** of tetra cupric and tricalcium sulphate with 27% copper, or Bouillie Bordelaise technical, allowing to elaborate commercial specialties such as 20% Bouillie Bordeaux.
- **The formulation and mixing** of fungicidal specialties intended for the treatment of crops such as, for example, mixtures based on Bouillie Bordelaise, Potassium bicarbonate, Cymoxanil, Mancozeb, Captan...

Environmental policy

The environmental protection is one of our daily concerns, for which we carry out actions in liaison with the services of the DREAL (Regional Directorate for the Environment of Planning and Housing).

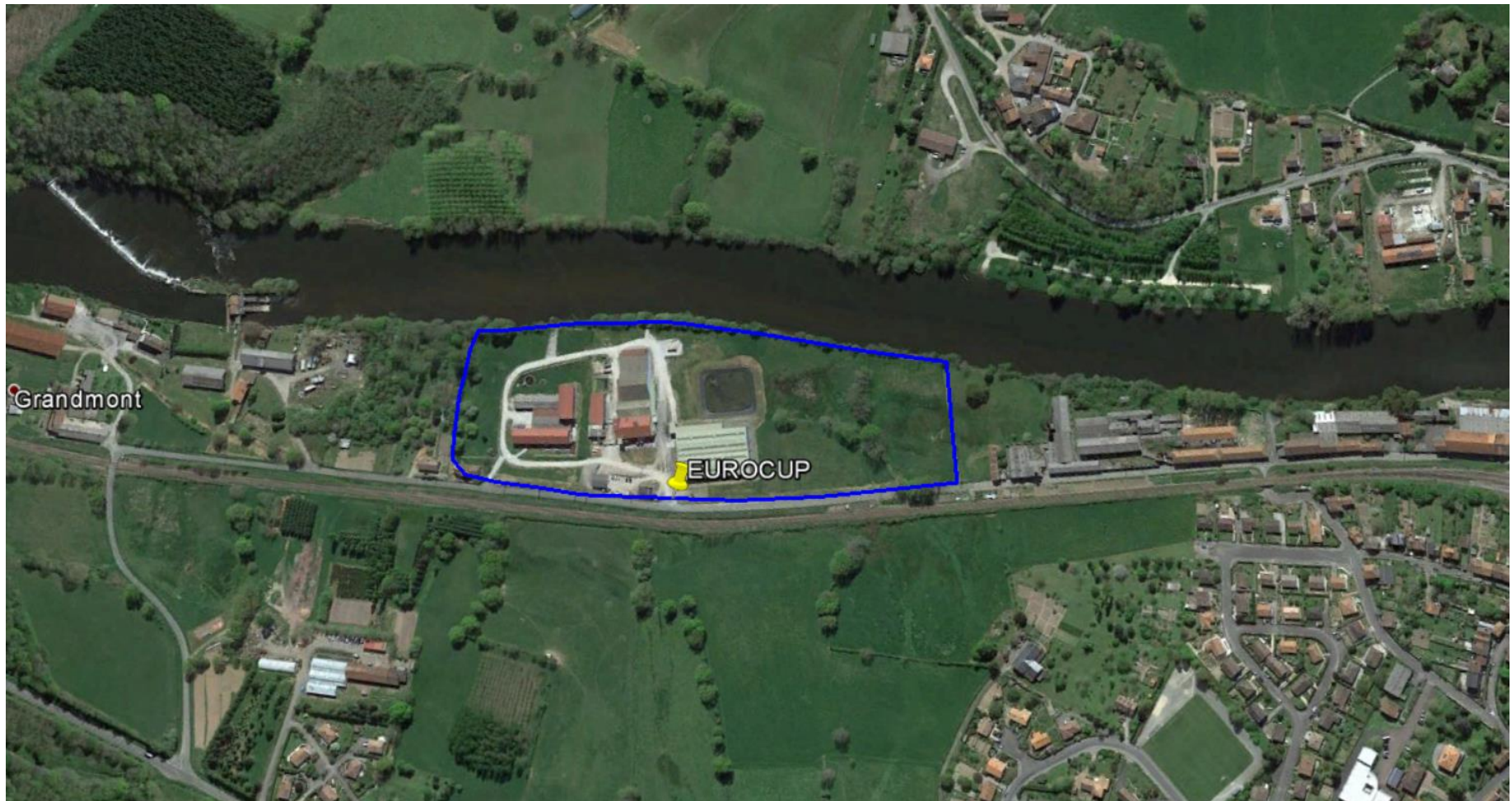
- **Treatment of industrial effluents via a station :**
 - Depollution of waters loaded with heavy metals such as copper and lead,
 - Reduction of polluting emissions,
 - Recycling of production water, and reduction of water consumption.
- **Waste sorting, recovery and recycling :**
 - Ordinary waste (wooden pallets, boxes...) are recycled,
 - Special waste (paper and plastic packaging contaminated from, waste from the treatment station) is sent to an incineration factory for energy recovery.
- **Monitoring of groundwater via piezometers.**

- **Geographical location**

Eurocup is located in the town of Saint Junien (87200) 28 kilometers ouest of Limoges and 20 kilometers of the airport, accessible by the RN141 (axe Limoges-Angoulême).

The main entrance of the factory is accessible by the Grammont road.





Scale $\approx 1/2\ 400$



Scale $\approx 1/1\,200$

The site

The Saint Junien company covers a total area of 50 000 m²

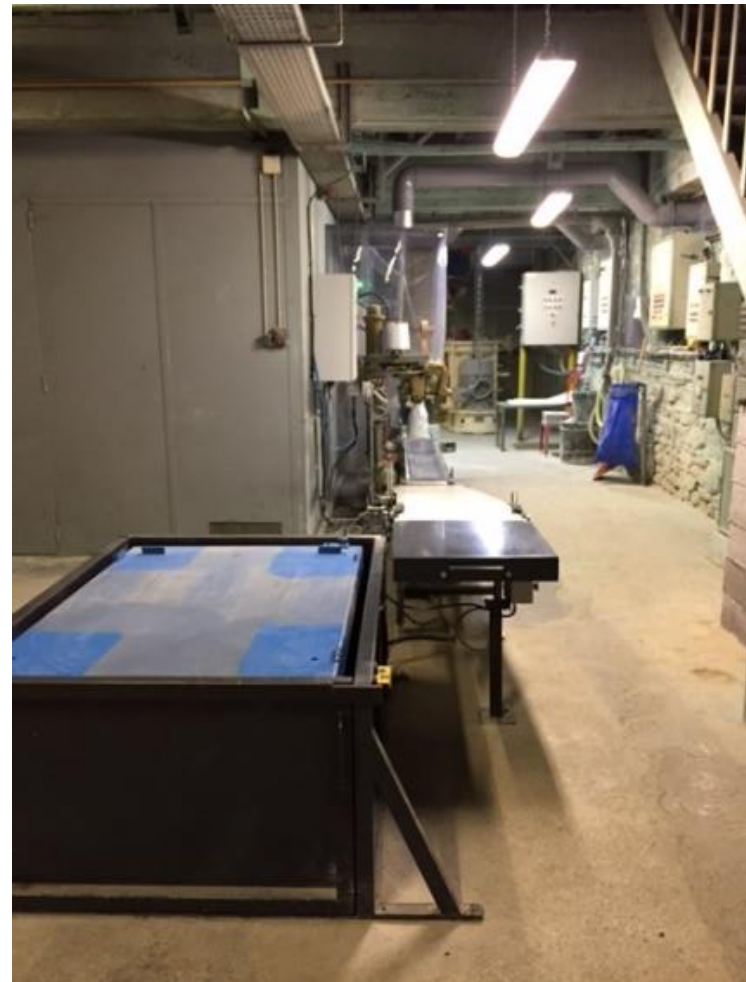
Whose :

- 5 750 m² of buildings
- 7 970 m² of developed surface including :
 - Storage building (3 300 m²) on retention (1 650 m³)
 - Storage annexes (2 040 m²)
 - Transit zone for raw materials (500 m²)
 - Workshops production (1 200 m²)
 - Maintenance and boiler room (60 m²)
 - Waste storage hall (400 m²)
 - Effluent treatment station (250 m²)
 - Offices, laboratory (110 m²)
 - Social housing (110 m²)
- Security retention : 2 500 m² in total

The staff

- Manager : 1
- Administrative employee : 1
- Laboratory technician : 1
- Maintenance worker : 1
- Manufacturing operators : 9

New automatic packaging line for wettable powders





Vacuum bag conditioner



Automatic bench



Sewing machine



Above-ground palletizer

Fertilizer packaging workshop



Small packing machine 1 kg



Small packing machine 5 kg

Transit zone for materials and finished products before palletization



Antifoam workshop



Loading



Absorption



Nautamix mixer



Nautamix mixer



Conditioning after filtration

New packaging line for powders



Packaging line composed of an automatic bagger and a welder



Small packing machine 5 kg

Waste storage hall



Facilities and buildings

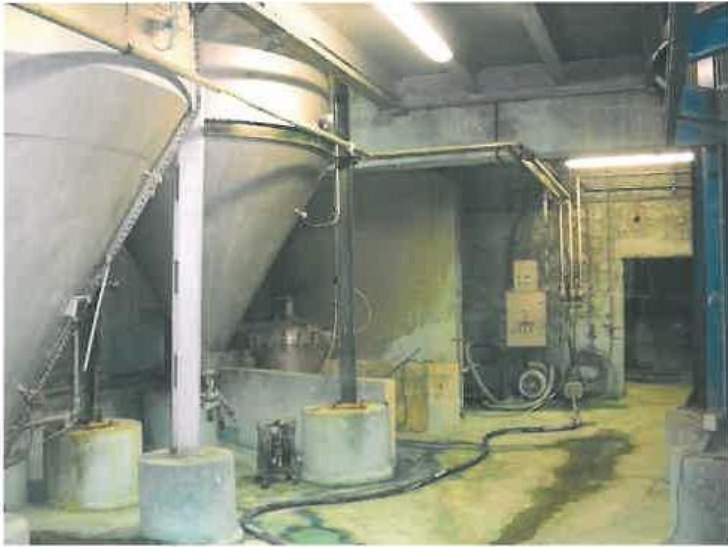
Storage buildings for finished products and hazardous materials



Storage building for non-hazardous raw material



Production workshop : synthesis of bouillie bordelaise



Reactors of dissolution of copper sulphate





Lime milk tanks



Dissolution reactors



Filtre rotatif avec radians



Séchoir rotatif système lit fluidisé

Formulation, mix and micronisation



Nutamix 3 500 litres



Nutamix



Micronizer



Cyclone



Loading materials

Effluent Treatment Plant



Water treatment tanks



Decaners



Press filter

Maintenance workshop



Laboratory



Offices



Social housing, refectory, cloakrooms

